



## Description

Mircom's MH-25 Series mini horns are compact electronic alarm appliances that are ideal for alarm signalling in individual rooms, apartments, hotels and offices where attractive appearance and dependable performance are prime concerns. When activated, the MH-25 Series mini-horns produce a high sound output of over 90 dBA at 10 feet with a minimum current draw of 15.5 milliamps at 24 VDC (unfiltered) on the non silenceable models. Designed as alert or alarm signal appliances for use with any conventional Fire Alarm Control panel, the MH-Series mini horns are available in a standard version (MH-25) and a Silenceable version (MH-S25).

The MH-S25 versions are silenceable mini horns equipped with a "Silence" push button and a red LED to indicate "active signal circuit" when lit. The push button allows the user to silence the mini-horn for a maximum of 10 minutes upon which the mini-horn will sound again until the signal circuit is inactive or the mini horn is silenced again or the fire alarm panel is reset. Upon the fire alarm being reset, it takes approximately 25 seconds for the MH-S25 Mini-Horns to reset.

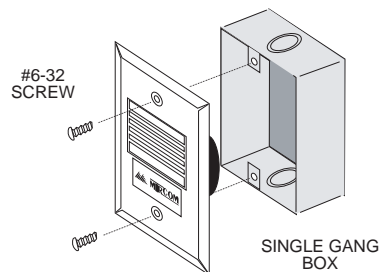
All MH-25 Series mini horns are designed for easy installation with convenient mounting to standard single gang boxes and in-out wire leads for fast connection. The front face plates are ruggedly constructed of high impact thermoplastic and are available in fire alarm red or off-white to blend with any room decor.

## Features

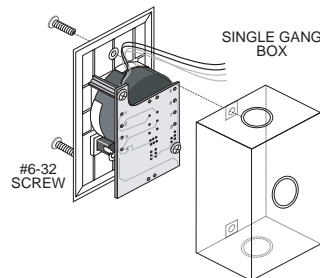
- High sound output for enhanced audibility (over 90 dBA at 10 feet) @ 24VDC
- "Silence" push button and red LED to indicate "active signal circuit" on MH-S25 versions
- 24 VDC models with wide listed voltage range, filtered DC (Non Silenceable only)
- Polarized inputs for compatibility with standard reverse polarity supervision of circuit wiring by an alarm panel
- Mounts into standard single gang box
- Flush or surface mounting options
- Compatible with sensitive detection and communication circuits
- Available in red or off-white finish

## Installation Instructions

### MH-25 Mini-Horn



### MH-S25 Silenceable Mini-Horn



**Note:** The MH-25 Series mini-horns are compatible with the CSIS-202 and CNSIS-204 Conventional Signal Isolator Modules. Please refer to Cat. Sheet #5223 and #5224.



S5375  
(MH-25R/  
MH-25W)



S5375



7135-1477-118  
(MH-25R/  
MH-25W)

**MEA**  
approved

313-97-E  
(MH-25R/  
MH-25W)

## Specifications

### MH-25R/MH-25W

Rated Voltage	10-28VDC			
Operating Voltage (V)	10	12	24	28
Current (mA)	5	6	17	27
Sound Level (dB)	85	87	91	95

### MH-S25R/MH-S25W

Rated Voltage	24-28VDC (Filtered or unfiltered (full-wave rectified))		
Rated Current	30 mA		
Sound Level (dB)	Operating Voltage (V)	24	28
	Indoor Measurement (dB @ 10 ft)	90	90

**Operating Temperature**  
-4°F to 140°F (-20°C to 60 °C)

**Weight**  
2.2oz (63g)

**Colour Selection**

Red/White

**Plate**

A.B.S.

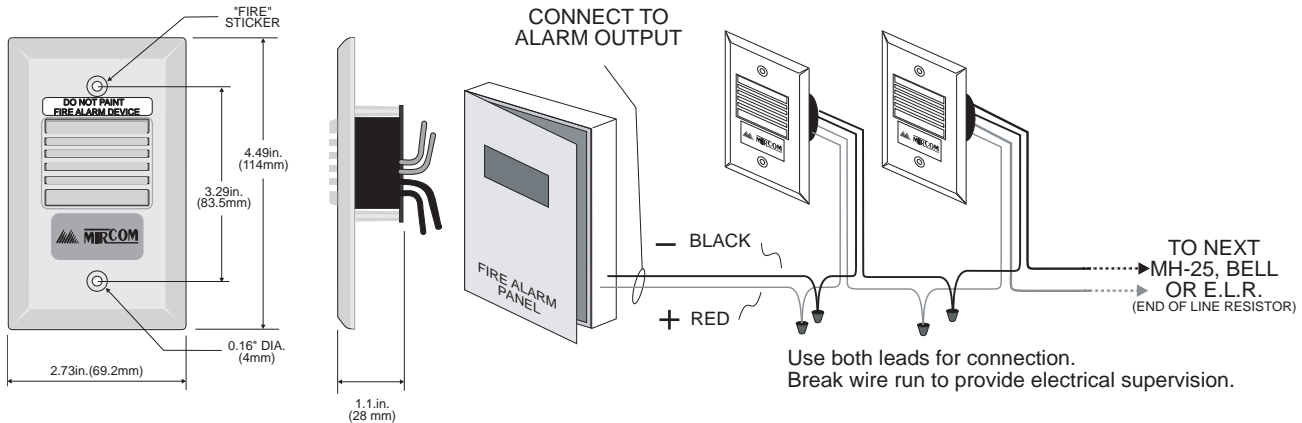
**Silencing Time (MH-S25 only)**

9 to 10 minutes

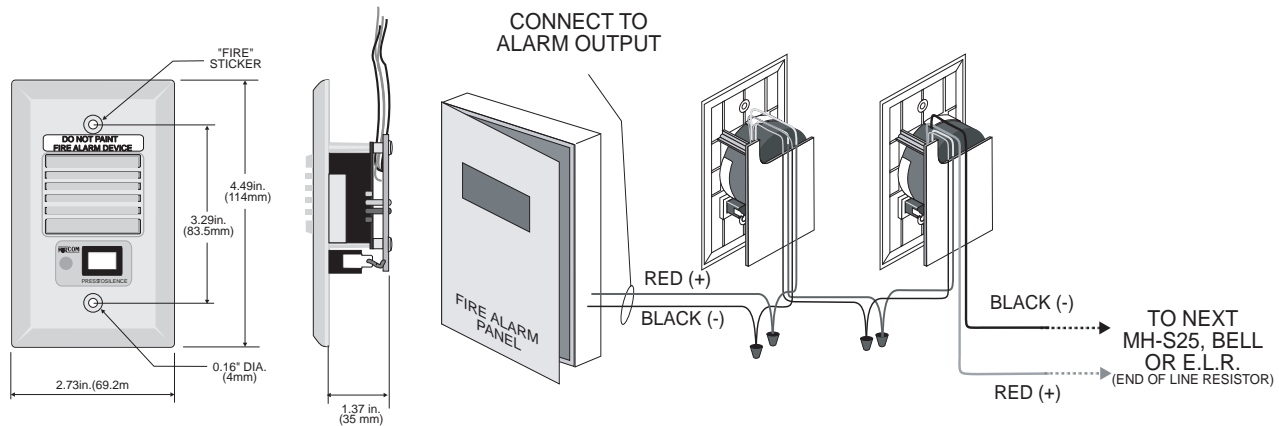
*Note: Sound level in an indoor installation may vary depending upon the space surroundings.*

## Typical Wiring Diagrams

### MH-25 Mini-Horn



### MH-S25 Silenceable Mini-Horn



## Ordering Information

Model	Description	Colour	Approval Listings
MH-25R	Mini-Piezo	Red	UL, ULC, CSFM, MEA
MH-25W	Mini-Piezo	White	UL, ULC, CSFM, MEA
MH-S25RA	Silenceable Mini-Piezo	Red	ULC
MH-S25WA	Silenceable Mini-Piezo	White	ULC